

# SPRING-SUMMER 2026



# SUITS & PANTS SUPER 140'S WOOL



### M40901-1 (Solid Black)

- Suits { 2BV No P, 2BV No P+Vest, Boy's, Euro Slim, DB, Portly, Peak Lapel Suit Vest, Separate Jacket
- Tuxedo { 2BV Tux, Euro Slim Tux, 1B Peak Lapel Tux, ShawlTux, DB Tux, Tux Vest
- Blazer 2BV Blazer
- Pants Non Pltd, 1 Pltd, Slim Fit, Tux Pants
- 2B Upto 60R & 60L, 42XL to 52XL

### M40901-2A (Solid Navy)

- Suits { 2BV No P, 2BV No P+Vest, Euro Slim Suit, Vest
- Pants Non Pltd, Slim Pants
- 2B Upto 60R & 60L

### M40901-2B (New Navy)

- Suits { 2BV No P, 2BV No P+Vest, Euro Slim, Portly, DB, Peak Lapel, Boy's Suit, Vest, Separate Jacket
- Blazer 2BV BLAZER
- Pants Non Pltd, 1 Pltd, Slim fit Pants
- 2B Upto 60R & 60L, 42XL to 52XL

### M40901-6 (Solid French Blue)

- Suits 2BV No P, Euro Slim Suit
- Pants Non Pltd Pants
- 2B Upto 60R & 60L, 42XL to 52XL

### M40901-9 (Sky Blue)

- Suits 2BV No P, Euro Slim, Savvy Suit
- Pants Non Pltd Pants
- 2B Upto 60R & 60L

### M46306-3 (Solid Charcoal)

- Suits { 2BV No P, 2BV No P+Vest, Euro Slim, Portly Suit, Vest
- Pants Non Pltd, 1 Pltd, Slim Fit Pants
- 2B Upto 60R & 60L, 42XL to 52XL

### M46306-1 (Solid Gray)

- Suits { 2BV No P, 2BV No P+Vest, DB, Euro Slim, Portly Suit, Separate Jacket, Suit Vest
- Pants Non Pltd, 1 Pltd, Slim Fit Pants
- 2B Upto 60R & 60L, 42XL to 52XL

### M46306-2 (Solid Lt. Gray)

- Suits { 2BV NP, 2BV NP+Vest, Euro Slim, Portly, Peak Lapel, Boys Suit, Vest
- Pants Non Pltd, 1 Pltd, Slim Fit Pants
- 2B Upto 60R & 60L, 42XL to 54XL



M40901-2B  
2BV NoP Suit



M46306-1  
2BV NoP Suit



M46306-2  
Peak Lapel



M46306-2  
Boys Suit



M40901-1  
2B Tuxedo+Vest



1B Peak Lapel Tuxedo



M46306-1  
Non Pltd Pants



Double Breasted  
Suit

# SUITS & PANTS

## SUPER 140'S WOOL



**M46306-4 (Sterling Gray)**  
Suits 2BV No P, Euro Slim Suit,  
Vest  
Pants Non Pleated Pants  
Made upto 60R & 60L



**M46306-5 (Oatmeal Taupe)**  
Suits 2BV No P, Slim Suit,  
Suit Vest  
Pants Non Pleated Pants  
Made upto 60R & 60L



**M40901-8 (Solid Brown)**  
Suits 2BV No P Suit  
Pants Non Pleated Pants  
Made up to 60R & 60L,  
42XL to 54XL



**M40901-7 (Solid Taupe)**  
Suits 2BV No P Suit  
Pants Non Pleated, 1 Pleated  
Made up to 60R & 60L



**M40901-16 (Solid Camel)**  
Suits 2BV No P, Portly Suit  
Pants Non Pleated, 1 Pleated  
Made up to 60R & 60L



**M40901-11 (New Beige)**  
Suits 2BV No P Suit  
Pants Non Pleated Pants  
Made up to 60R & 60L



↓ SUITS ONLY ↓

**M87183-2 (Sky Blue Sharkskin)**  
2BV No P, Savvy Slim Suit  
Made up to 56R & 56L



M46306-4



M46306-5  
2BV No P



M40901-7  
2BV No P



M40901-16



M40901-11

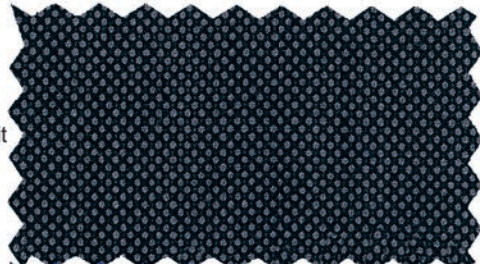


M87183-2

# SUITS SUPER 140'S WOOL



**M46500-1 (Gray Birdseye)**  
2BV No P, Savvy Slim, Portly Suit  
Made up to 56R & 56L

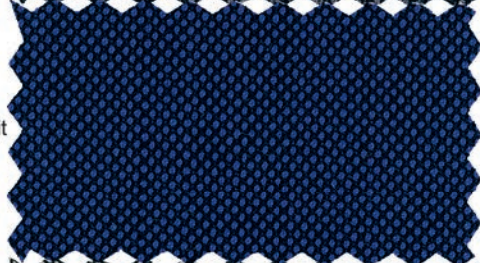


M46500-1

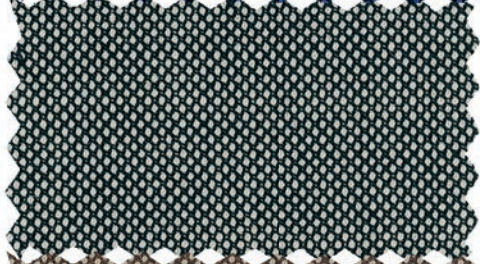


M46500-2

**M46500-2 (Blue Birdseye)**  
2BV No P, Savvy Slim, Portly Suit  
Made up to 56R & 56L



**M46501-3 (Light Gray Birdseye)**  
2BV No P, Savvy Slim Suit  
Made upto 56R & 56L



M46501-3



M46501-5

**M46501-4 (Taupe Birdseye)**  
2BV No P, Savvy Slim Suit  
Made upto 56R & 56L



**M46501-5 (Light Blue Birdseye)**  
2BV No P, Savvy Slim Suit  
Made upto 56R & 56L



**M78200-4 (Lt. Blue Sharkskin)**  
2BV No P, Savvy Slim Suit  
Made up to 56R & 56L



M87164-1

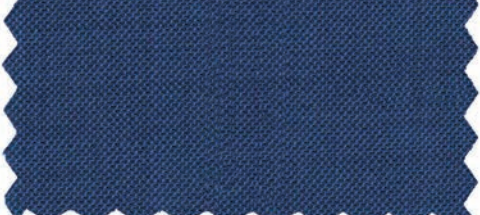


M78200-4

**M78200-5 (Blue Sharkskin)**  
2BV No P, Savvy Slim Suit  
Made up to 56R & 56L



**M87164-1 (Ink Blue Teakweave)**  
2BV No P, Savvy Slim Suit  
Made up to 56R & 56L



# SUITS

## SUPER 140'S WOOL



4

**M87184-1 (Black Stripe)**  
2BV No P, DB Suit  
Made up to 56R & 56L



**M87184-2 (Navy Stripe)**  
2BV No P, DB Suit  
Made up to 56R & 56L



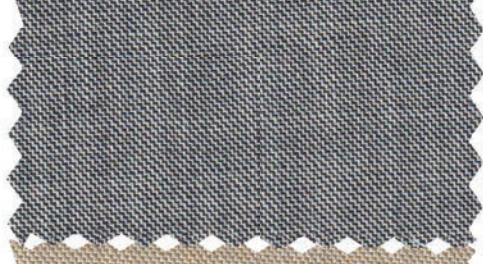
**M87184-3 (Gray Stripe)**  
2BV No P Suit  
Made up to 56R & 56L



**M87130-1 (Navy Stripe)**  
2BV No P Suit  
Made up to 56R & 56L



**M87185-1 (Light Gray Sharkskin)**  
2BV No P, Savvy Slim, Portly Suit  
Made up to 56R & 56L



**M87185-2 (Tan Sharkskin)**  
2BV No P Suit  
Made up to 56R & 56L



## STRETCH SUITS

**STRETCH SUITS**  
**MS4000-1 (Black Stretch)**  
Stretch 2BV No P Suit  
**4 Way Stretch**, Wrinkle Resistant  
Made upto 54R & 56L



**STRETCH SUITS**  
**MS4000-2 (Navy Stretch)**  
Stretch 2BV No P Suit  
**4 Way Stretch**, Wrinkle Resistant  
Made upto 54R & 56L



**STRETCH SUITS**  
**MS4000-3 (Gray Stretch)**  
Stretch 2BV No P Suit  
**4 Way Stretch**, Wrinkle Resistant  
Made upto 54R & 56L



# SUITS

SUPER 140'S WOOL



**M87888-1 (Gray Windowpane)**  
2BV No P, Euro Slim Suit  
Made Upto 56R & 56L



**M87889-1 (Black Tonal Windowpane)**  
2BV No P Suit  
Made Upto 56R & 56L



**M87889-2 (Navy Tonal Windowpane)**  
2BV No P, Savy Slim Suit  
Made Upto 56R & 56L



**M87890-1 (Blue Plaid)**  
2BV No P, Savy Slim Suit  
Made Upto 56R & 56L



**M87891-1 (Navy Plaid)**  
2BV No P, Savy Slim Suit  
Made Upto 56R & 56L



**M87892-1 (Blue Plaid)**  
2BV No P Suit  
Made Upto 56R & 56L



**M87893-1 (Gray Windowpane)**  
2BV No P Suit  
Made Upto 56R & 56L



**M87894-1 (Gray Plaid)**  
2BV No P Suit  
Made Upto 56R & 56L



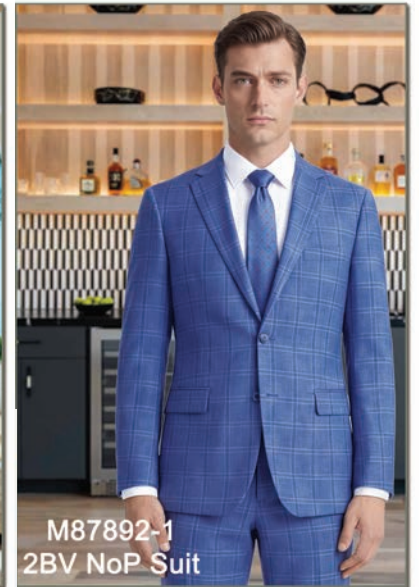
**M87888-1**  
2BV NoP Suit



**M87890-1**  
2BV NoP Suit



**M87891-1**  
2BV NoP Suit



**M87892-1**  
2BV NoP Suit



**M87893-1**  
2BV NoP Suit



**M87894-1**  
2BV NoP Suit

**SUITS**  
SUPER 140'S WOOL



**M87895-1**  
**(Navy Windowpane)**  
2BV No P Suit  
Made Upto 56R & 56L



**M87895-2**  
**(Gray Windowpane)**  
2BV No P, DB Suit  
Made Upto 56R & 56L



**M87896-1**  
**(Navy Lavender Windowpane)**  
2BV No P Suit  
Made Upto 56R & 56L



**M87100-1 (Black Stripe)**  
2BV No P Suit  
Made Upto 56R & 56L



**M87100-2 (Navy Stripe)**  
2BV No P, DB Suit  
Made Upto 56R & 56L



**M87100-3 (Charcoal Stripe)**  
2BV No P Suit  
Made Upto 56R & 56L



**M87185-4 (Dark Lavender Black)**  
2BV No P, Savy Slim Suit  
Made Upto 56R & 56L

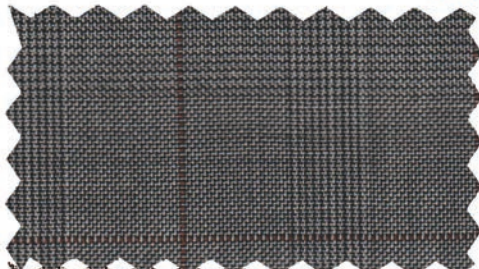


# SUITS

SUPER 140'S WOOL



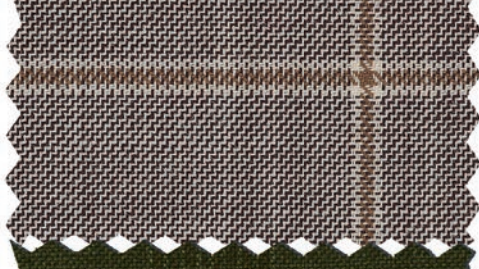
**M87886-1 (Gray Plaid)**  
2BV No P Suit  
Made Upto 56R & 56L



**M87870-1 (Tan / Brown Windowpane)**  
2BV No P Suit  
Made Upto 56R & 56L



**M87871-1 (Tan / Camel Windowpane)**  
2BV No P Suit  
Made Upto 56R & 56L



**M87878-1 (Charcoal Windowpane)**  
2BV No P Suit  
Made Upto 56R & 56L



**M87881-1 (Brown Windowpane)**  
2BV No P Suit  
Made Upto 56R & 56L



**M87882-1 (Taupe Windowpane)**  
2BV No P Suit  
Made Upto 56R & 56L



**M87883-1 (Gray Windowpane)**  
2BV No P Suit  
Made Upto 56R & 56L



**M87884-1 (Charcoal Windowpane)**  
2BV No P Suit  
Made Upto 56R & 56L



M87886-1



M87871-1



M87881-1



M87882-1



M87883-1



M87884-1

# SUITS

## SUPER 150'S WOOL

ENZO TOVARE

**E59663-1 (Solid Black)**  
 Suits 2BV No P,  
 Savvy Semi Slim Suit  
 Tuxedo 2BV Tux, 1B Peak Tux,  
 Shawl Tuxedo  
 2BV Made upto 54R & 54L



**E59663-2 (Solid Navy)**  
 2BV No P, Savvy Semi Slim Suit  
 2BV Made upto 54R & 54L



**E59663-6 (Solid Blue)**  
 2BV No P, Savvy Semi Slim Suit  
 2BV Made upto 54R & 54L



**E59663-3 (Solid Charcoal)**  
 2BV No P, Savvy Semi Slim Suit  
 2BV Made upto 54R & 54L



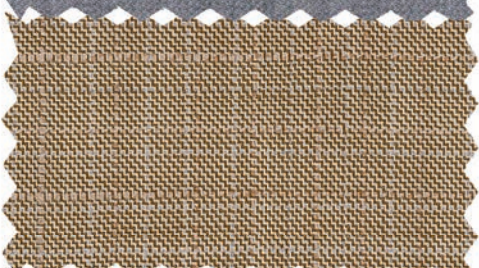
**E59663-5 (Solid Gray)**  
 2BV No P, Savvy Semi Slim Suit  
 2BV Made upto 54R & 54L



**E59663-4 (Solid Light Gray)**  
 2BV No P, Savvy Semi Slim Suit  
 2BV Made upto 54R & 54L



**E84595-1 (Tan Crossweave)**  
 2BV No P Suit  
 Made Upto 52R & 52L



**E84586-1 (Lt. Gray Sharkskin)**  
 Savvy Semi Slim Suit  
 Made upto 52R & 52L



9 SUITS



SUITS  
SUPER 150'S WOOL

E84601-1  
(Navy Tonal Windowpane)  
2BV No P, Savy Slim Suit  
Made Upto 52R & 52L

E84602-1  
(Black Tonal Windowpane)  
2BV No P Suit  
Made Upto 52R & 52L

E84603-1  
(Black Tonal Windowpane)  
2BV No P Suit  
Made Upto 52R & 52L

E84605-1  
(Light Gray Windowpane)  
2BV No P Suit  
Made Upto 52R & 52L

E84606-1  
(Bone Windowpane)  
2BV No P Suit  
Made Upto 52R & 52L

E84607-1  
(Gray Windowpane)  
2BV No P Suit  
Made Upto 52R & 52L

E84608-1  
(Mocha Sharkskin)  
2BV No P Suit  
Made Upto 52R & 52L

E84600-1  
(Lt. Gray/ Pink Windowpane)  
2BV No P Suit  
Made Upto 52R & 52L

E84588-1 (Taupe Plaid)  
2BV No P Suit  
Made up to 52R & 52L



9 SUITS



SUITS  
SUPER 150'S WOOL

E84601-1  
(Navy Tonal Windowpane)  
2BV No P, Savy Slim Suit  
Made Upto 52R & 52L

E84602-1  
(Black Tonal Windowpane)  
2BV No P Suit  
Made Upto 52R & 52L

E84603-1  
(Black Tonal Windowpane)  
2BV No P Suit  
Made Upto 52R & 52L

E84605-1  
(Light Gray Windowpane)  
2BV No P Suit  
Made Upto 52R & 52L

E84606-1  
(Bone Windowpane)  
2BV No P Suit  
Made Upto 52R & 52L

E84607-1  
(Gray Windowpane)  
2BV No P Suit  
Made Upto 52R & 52L

E84608-1  
(Mocha Sharkskin)  
2BV No P Suit  
Made Upto 52R & 52L

E84600-1  
(Lt. Gray/ Pink Windowpane)  
2BV No P Suit  
Made Upto 52R & 52L

E84588-1 (Taupe Plaid)  
2BV No P Suit  
Made up to 52R & 52L



E84601-1



E84603-1



E84605-1



E84606-1



E84607-1



E84608-1

9 SUITS



SUITS  
SUPER 150'S WOOL

E84601-1  
(Navy Tonal Windowpane)  
2BV No P, Savy Slim Suit  
Made Upto 52R & 52L

E84602-1  
(Black Tonal Windowpane)  
2BV No P Suit  
Made Upto 52R & 52L

E84603-1  
(Black Tonal Windowpane)  
2BV No P Suit  
Made Upto 52R & 52L

E84605-1  
(Light Gray Windowpane)  
2BV No P Suit  
Made Upto 52R & 52L

E84606-1  
(Bone Windowpane)  
2BV No P Suit  
Made Upto 52R & 52L

E84607-1  
(Gray Windowpane)  
2BV No P Suit  
Made Upto 52R & 52L

E84608-1  
(Mocha Sharkskin)  
2BV No P Suit  
Made Upto 52R & 52L

E84600-1  
(Lt. Gray/ Pink Windowpane)  
2BV No P Suit  
Made Upto 52R & 52L

E84588-1 (Taupe Plaid)  
2BV No P Suit  
Made up to 52R & 52L



E84601-1



E84603-1



E84605-1



E84606-1



E84607-1



E84608-1

SUITS, PANTS & VESTS

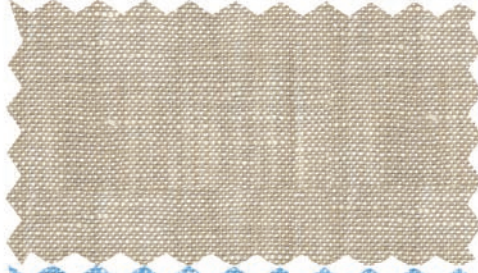


100% LINEN  
SUITS, PANTS & VESTS

**E58302-1 (White Linen)**  
Suits 2BV No P Suit,  
Vest (Optional)  
Pants Non Pleated Pants  
Made up to 52R & 52L



**E58302-7 (Natural Linen)**  
Suits 2BV No P Suit,  
Vest (Optional)  
Pants Non Pleated Pants  
Made up to 52R & 52L



**E58302-9 (Baby Blue Linen)**  
Suits 2BV No P Suit,  
Vest (Optional)  
Pants Non Pleated Pants  
Made up to 52R & 52L



**E85302-4 (Gray Linen)**  
2BV No P Suit  
Made Upto 60R & 60L



**E85302-2 (Ink Blue Linen)**  
2BV No P Suit  
Made Upto 60R & 60L



↓ 100% Cotton ↓  
Suits

**E58303-1 (Blue Seersucker)**  
100% Cotton  
Suits 2BV No P Suit  
Made up to 52R & 54L



↓ Cotton Suits & Pants ↓

**E58304-3 (White Cotton)**  
Suits 2BV No P Suit  
Pants Non Pleated Pants  
Made up to 52R & 54L



**E58304-5 (Tan Cotton)**  
Suits 2BV No P Suit  
Pants Non Pleated Pants  
Made up to 52R & 54L





D30001-1 (Solid Black)  
2BV No P Suit  
Made up to 50R & 50L



D30001-2 (Solid Navy)  
2BV No P Suit  
Made up to 50R & 50L



D30001-3 (Solid Charcoal)  
2BV No P Suit  
Made up to 50R & 50L



D30008-1  
(Black Tonal Windowpane)  
2BV No P, Slim Suit  
Made up to 52R & 52L



D30008-2  
(Navy Tonal Windowpane)  
2BV No P, Slim Suit  
Made up to 52R & 52L



D30009-1  
(Black Tonal Stripe)  
2BV No P Suit  
Made up to 52R & 52L



D30013-1  
(Sand Windowpane)  
2BV No P, Slim Suit  
Made up to 52R & 52L



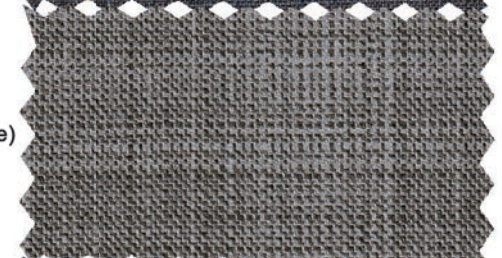
D30014-1  
(Blue Gray Shaksing)  
2BV No P Suit  
Made up to 52R & 52L



D30015-1  
(Blue Gray Windowpane)  
2BV No P Suit  
Made up to 52R & 52L



D30016-1  
(Salt & Pepper Windowpane)  
2BV No P Suit  
Made up to 52R & 52L



D30018-1  
(Navy Windowpane)  
2BV No P Suit  
Made up to 52R & 52L



WOOL/STRETCH SUITS

**WOOLSTON**  
WOOL STRETCH

STRETCH ARM HOLE

WS11001-1 (Solid Black)  
2BV No P, Euro Slim Suit

WS11001-2 (Solid Navy)  
2BV No P Suit

WS11001-3  
(Solid Charcoal)  
2BV No P Suit

WS11001-4 (Solid Gray)  
2BV No P Suit



WS11002-1  
(Blue Windowpane)  
2BV No P Suit

WS11002-2 (Blue Plaid)  
2BV No P Suit

WS11002-3  
(Navy Windowpane)  
2BV No P Suit

WS11002-4  
(Blue Windowpane)  
2BV No P Suit

WS11002-5  
(Navy Windowpane)  
2BV No P Suit



**SUITS**  
WOOL & SILK BLEND

B66050-1 (Solid Black)  
2BV No P, 2BV No P+Vest,  
Euro Slim Suit  
2BV Made up to 60R & 60L

B66050-2B (Solid Navy)  
2BV No P, 2BV No P+Vest,  
Euro Slim Suit  
2BV Made up to 60R & 60L

B66051-1A (Solid Gray)  
2BV No P, 2BV No P+Vest,  
Euro Slim Suit  
2BV Made up to 60R & 60L

B66051-2 (Light Gray)  
2BV No P, Euro Slim Suit  
2BV Made up to 60R & 60L



**G49500-1 (Black Stretch)**  
 2BV No P, Euro Slim Suit  
 Made upto 56R & 56L

**G49500-2 (Navy Stretch)**  
 2BV No P, Euro Slim Suit  
 Made Upto 56R & 56L

**G49500-3 (Gray Stretch)**  
 2BV No P, Euro Slim Suit  
 Made Upto 56R & 56L

**G49500-4A (Tan Stretch)**  
 2BV No P, Euro Slim Suit  
 Made Upto 56R & 56L

**G49500-6 (Charcoal Patterned Stretch)**  
 2BV No P Suit  
 Made Upto 56R & 56L

**G49500-16 (Camel Stretch)**  
 2BV No P Suit  
 Made Upto 56R & 56L

**G49500-24 (Light Gray Stretch)**  
 2BV No P, Euro Slim Suit  
 Made Upto 56R & 56L

**GS79772-1 (Blue Sharkskin)**  
 2BV No P Suit  
 Made Upto 56R & 56L

**GS79772-2 (Tan Textured)**  
 2BV No P Suit  
 Made Upto 56R & 56L



GS49500-3



GS49500-2



GS49500-16



GS49500-24

**G79758-1 (Charcoal Textured)**  
 Euro Slim Suit  
 4 Way Comfort Stretch

**G79759-1 (Gray Birdseye)**  
 2BV No P Suit  
 4 Way Comfort Stretch

**G79756-1 (Gray Windowpane)**  
 2BV No P Suit  
 4 Way Comfort Stretch



**STRETCH COMFORT SUITS**

*Giorgio Fiorelli*  
**GIORGIO FIORELLI**  
 -EST 1984-

**STRETCH COMFORT SUITS 14**

4 WAY STRETCH MICROFIBER

**GS79766-1**  
 (Navy Windowpane)  
 Euro Slim Suit  
 Made upto 56R & 56L



**GS79766-1**

**GS79767-1**  
 (Salmon Windowpane)  
 2BV No P Suit  
 Made Upto 56R & 56L



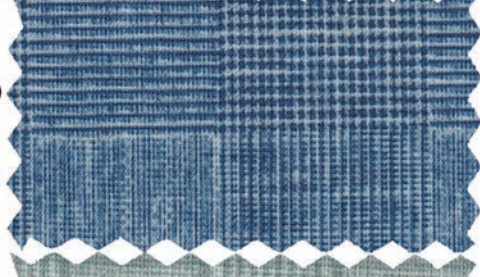
**GS79767-1**

**GS79768-1**  
 (Blue Birdseye)  
 2BV No P Suit  
 Made Upto 56R & 56L



**GS79769-1**

**GS79769-1 (Blue Plaid)**  
 2BV No P Suit  
 Made Upto 56R & 56L



**GS79770-1**

**GS79770-1**  
 (Green Plaid)  
 2BV No P Suit  
 Made Upto 56R & 56L



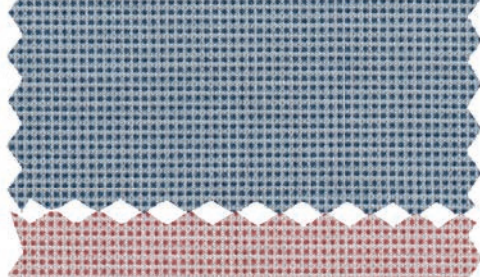
**GS79771-2**

**GS79770-2 (Tan Plaid)**  
 2BV No P Suit  
 Made Upto 56R & 56L

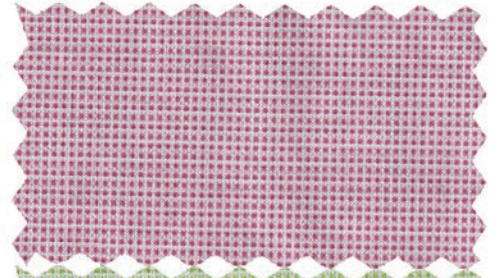


**GS79771-4**

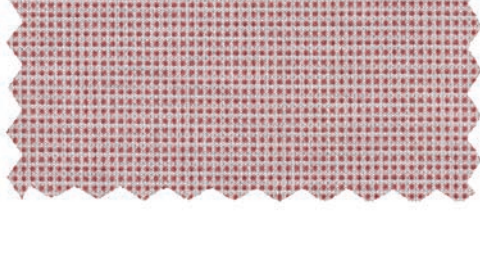
**GS79771-1 (Blue Teak)**  
 Euro Slim Suit  
 Made Upto 56R & 56L



**GS79771-3 (Lavender Teak)**  
 2BV No P Suit  
 Made Upto 56R & 56L



**GS79771-2 (Pink Teak)**  
 2BV No P Suit  
 Made Upto 56R & 56L



**GS79771-4 (Green Teak)**  
 2BV No P Suit  
 Made Upto 56R & 56L



**SUITS & PANTS**  
PREMIUM POLY RAYON



**G47815-1 (Solid Black)**  
**Suits** { 2BV No P, 2BV No P+Vest,  
Euro Slim, Portly, DB, Peak Lapel,  
Vest, Boy's Suit +Vest, 2BV Blazer,  
Separate Jacket in Slim & Reg. fit  
**Tuxedo** { 2B Adj., Arlan Tux, Shawl Tux,  
Arlan Vest, 2B Tux, Slim Tux, Boy's  
Tux+Vest, Oscar Tux+Vest  
**Rental** Stretch Suit, Tux & Vest  
**Pants** { No Pltd, 1 Pltd, Slim, Adj. Tux,  
Adj No P Suit, Rental Mod & Trim Fit



**G47815-2B (New Navy)**  
**Suits** { 2BV No P, 2BV No P+Vest,  
Euro Slim, Vest, Portly, Peak Lapel,  
DB Suit, Boy's+Vest Suit,  
Separate 2BV Jacket  
**Rental** Stretch in 2BV & Slim Fit, Vest  
**Tuxedo** Oscar+Vest  
**Blazer** 2BV Blazer  
**Pants** { No Pltd, 1 pleated  
Slim, Rental Mod & Trim Fit



**G47815-18 (Ink Blue)**  
**Suits** 2BV No P, Euro Slim, DB Suit, Vest  
**Tuxedo** Arlan Tux, Shawl Tux, Arlan Vest  
**Blazer** Boy's Blazer  
 Call For Sizes Available  
**Pants** No Pltd



**G47815-19 (Indigo Blue)**  
**Suits** 2BV No P, Euro Slim Suit  
 Call For Sizes Available  
**Pants** No Pltd



**G47815-17 (French Blue)**  
**Suits** { 2BV No P, 2BV No P+Vest,  
Suit Vest, Euro Slim, Portly,  
Boy's+Vest Suit  
**Tuxedo** { Shawl Tux, Arlan Tux, Arlan Vest,  
Oscar+Vest Tux  
**Rental** Stretch in 2BV and Slim Fit, Vest  
**Pants** Non Pltd, Slim Pants

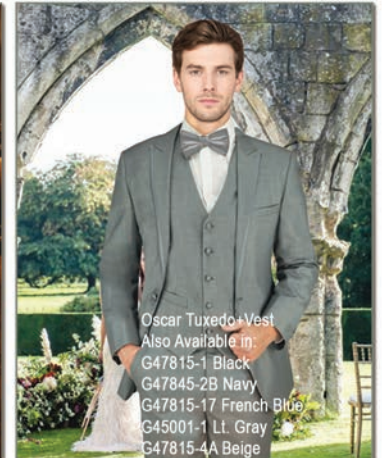
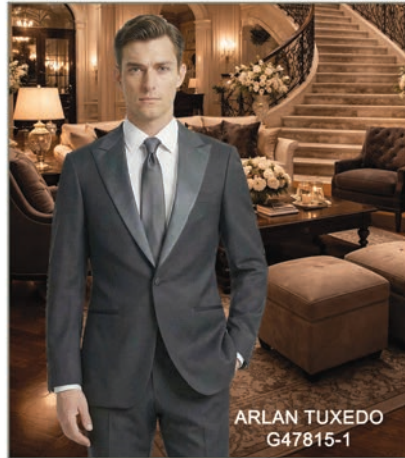


**G47815-9 (Light Blue)**  
**Suits** { 2BV No P, Euro Slim  
Boys+Vest Suit, Suit Vest  
 Made up to 60R & 60L  
**Pants** No Pltd



**G47815-3 (Solid Light Gray)**  
**Suits** 2BV No P, Euro Slim Suit, Vest  
**Pants** Non Pleated  
 Made upto 56R & 56L





VELVET TUXEDO MANTONI

M42000-1 (Black Velvet)  
1 Button Peak Lapel Tux Jacket  
Pants are Optional  
Made up to 52R & 52L

PREMIUM POLY RAYON TUXEDOS

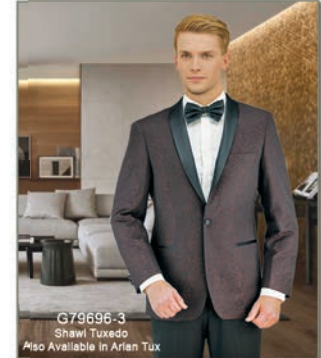
G79696-1 (Black Paisly)  
Arlan Tux, Shawl Tux  
Black Stain Lapel, Black Adj. Pants  
Made Upto 60R & 60L

G79696-2 (Blue Paisly)  
Arlan Tux, Shawl Tux  
Black Stain Lapel, Black Adj. Pants  
Made Upto 60R & 60L

G79696-3 (Burgundy Paisly)  
Arlan Tux, Shawl Tux  
Black Stain Lapel, Black Adj. Pants  
Call For Sizes Available

G79505-1 (Blue Sharkskin)  
Oscar Tux+Vest, Arlan Tux+Vest  
Both Style Come with Vest  
Made Upto 56R & 56L

G79505-2(Gray Sharkskin)  
Arlan Tux, Shawl Tux, Arlan Vest  
Oscar Tux+Vest, Arlan Tux+Vest  
Made Upto 56R & 60L



# SUITS & PANTS

PREMIUM POLY RAYON

*Giorgio Fiorelli*  
GIORGIO FIORELLI  
-EST 1984-

**G49412-1 (Solid Charcoal)**  
Suits { 2BV No P, 2BV No P+Vest,  
Euro Slim, Vest, Portly Suit,  
Boy's+Vest Suit  
Pants No Pltd, 1Pltd, Slim Pants  
2B Made up to 60R & 64L, 42XL -56XL

**G49412-2 (Medium Gray)**  
Suits { 2BV No P, 2BV No P+Vest,  
Euro Slim, Vest, Boy's+Vest Suit,  
2BV Blazer, Separate Jacket  
Rental Suit Separates 2BV & Slim Fit, Vest  
Pants No Pltd, 1Pltd, Slim, Rental Pants  
2B Made up to 60R & 60L

**G45001-1 (Solid LT. Gray)**  
Suits { 2BV No P, 2BV No P+Vest, Portly,  
Euro Slim, Peak Lapel, DB Suit, Vest,  
Boy's+Vest Suit, Separate Jacket  
Tuxedo { Arlan Tux, Shawl Tux,  
Arlan Vest, Oscar Tux+Vest  
Rental Stretch in 2 BV, Trim Fit, Vest  
Pants No Pltd, 1Pltd, Slim Pants

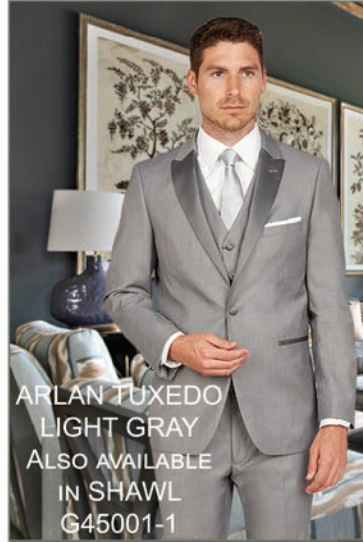
**G45001-2 (Sterling Gray)**  
Suits { 2BV No P, 2BV No P+Vest, Euro Slim  
Portly Suit, Suit Vest, Boy's+Vest Suit  
Rental Stretch in 2BV & Trim Fit, Rental Vest  
Pants No P Pants  
2B upto 60R & 64L, 42XL-56XL

**G45001-3 (Oatmeal Taupe)**  
Suits 2BV No P Suit, Vest  
Pants No P Pants  
Made upto 60R & 60L

**G47815-12 (Solid Burgundy)**  
Suits 2BV No P, Euro Slim, Boys+Vest Suit,  
Vest  
Tuxedo Arlan Tux, Shawl Tux, Arlan Vest  
Rental Stretch in 2BV, Slim fit, Vest  
Pants No Pltd, 1Pltd, Slim, Rental Mod & trim  
2B Made Upto 56R & 56L

**G47815-5 (Off White)**  
Suits 2BV No P Suit, Vest  
Jacket Dinner Jacket  
Pants Non Pleated  
Made upto 60R & 60L

**G47815-5A (Snow White)**  
Suits { 2BV No P, Euro Slim,  
Boys Suit+Vest, Suit Vest  
Tuxedo { 2B No P Adj. Tux, Shawl Tux,  
Arlan Tux  
Jacket Dinner Jackets  
Pants Non Pleated



**G47815-20 (Hunter Green)**  
Suits 2BV No P, Euro Slim Suit, Vest  
Rental Stretch in 2 BV, Slim Fit, vest  
Pants Non Pleated  
Made up to 60R & 60L

**G47815-11 (Solid Olive)**  
2BV No P Suit, Vest  
Made up to 56R & 56L  
Pants Non Pleated

**G47815-10 (Forrest Green)**  
Suits 2BV No P, Euro Slim Suit, Vest  
Pants No Pltd  
Made up to 56R & 56L

**G47815-14 (Sage)**  
2BV No P, Euro Slim Suit, Vest  
Pants: No P Pants  
Made Upto 56R & 56L

**G47815-16 (Solid Camel)**  
Suits { 2BV No P, 2BV No P+Vest,  
Euro Slim Suit  
Pants Non Pleated, 1 Pleated, Slim Pants  
Made upto 60R & 60L

**G47815-4A (New Biege)**  
Suits { 2BV No P, 2BV No P+Vest,  
Euro Slim, Portly Suit, Vest,  
Boy's Suit+Vest  
Tuxedo Oscar Tuxedo+Vest  
Rental Stretch in 2BV, Slim Fit, Vest  
Pants Non Pltd, Slim, Rental Pants  
2B Made upto 60R & 60L, 42XL-56XL

**G47815-8 (Solid Brown)**  
Suits 2BV No P, Portly Suit, Vest  
Pants Non Pleated, 1 Pltd, Slim Pants  
Upto 60R & 60L & XL in 2BV

**G49510-2 (Sand Gray Sharkskin)**  
2BV No P Suit  
Made up to 60R & 60L

**G49510-1 (Gray Sharkskin)**  
2BV No P Suit  
Made up to 60R & 60L



G47815-20



G47815-11



G47815-10



G47815-16  
2BV No P



G47815-4A  
2BV No P Suit

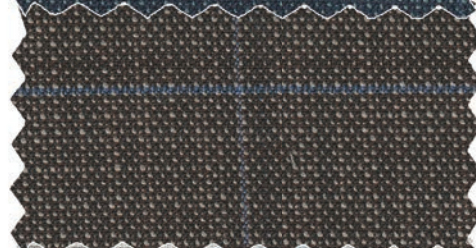


G47815-4A  
Oscar Tuxedo

**G79761-1**  
(Blue Gray Windowpane)  
2BV No P, Euro Slim Suit  
Made upto 56R & 56L



**G79761-2**  
(Brown Windoepane)  
2BV No P Suit  
Made Upto 56R & 56L



**G79762-1**  
(Gray Blue Windowpane)  
2BV No P,  
2BV No P+Vest Suit  
Made Upto 56R & 56L



**G79764-1**  
(Navy Windowpane)  
2BV No P, Euro Slim Suit  
Made Upto 56R & 56L



**G79765-1 (Bone Plaid)**  
2BV No P Suit  
Made Upto 56R & 56L



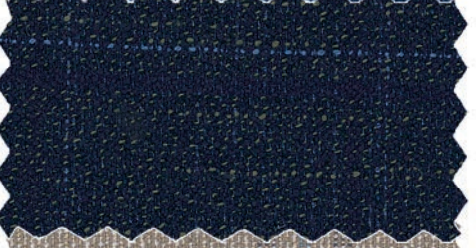
**G79755-1**  
(Charcoal Windowpane)  
2BV No P Suit  
Made Upto 56R & 56L



**G79736-1**  
(Navy Windowpane)  
2BV No P Suit  
Made Upto 56R & 56L



**G79737-1**  
(Navy Windowpane)  
2BV No P, Euro Slim Suit  
Made Upto 56R & 56L



**G66046-1 (Black Stripe)**  
2BV No P, DB, Portly Suit  
2BV XL Suit  
2B Made upto 58R & 56L,  
42XL-52XL

**G79741-1**  
(Taupe Windowpane)  
2BV No P Suit  
Made Upto 56R & 56L



**G66046-2 (Navy Stripe)**  
2BV No P, DB, Portly Suit  
2BV XL Suit  
2B Made upto 58R & 56L,  
42XL-52XL



# SLIM SUITS

MICRO FIBER

T30110-1 (Black)  
Manchester Slim Suit  
Made upto 50R & 48L



T30110-2 (New Navy)  
Manchester Slim Suit  
Made upto 50R & 48L



T30110-17 (French Blue)  
Manchester Slim Suit  
Made upto 50R & 48L



T30110-3 (Light Gray)  
Manchester Slim Suit  
Made upto 50R & 48L



T30110-12 (Burgundy)  
Manchester Slim Suit  
Made upto 50R & 48L



T30155-1 (Gray Plaid)  
Manchester Slim Suit  
Made Upto 50R & 48L



T30156-1  
(Navy Windowpane)  
Manchester Slim Suit  
Made Upto 50R & 48L



T30157-1  
(Burgundy Windowpane)  
Manchester Slim Suit  
Made Upto 50R & 48L



T30157-2 (Navy Windowpane)  
Manchester Slim Suit  
Made Upto 50R & 48L



T30151-2 (Cranberry Crossweave)  
Manchester Slim Suit  
Made Upto 50R & 48L



**SUITS & PANTS**  
SUPER 150'S POLY-RAYON



**SUITS & PANTS**

**C67901-1 (Solid Black)**  
2BV No P, 2BV No P+Vest,  
Euro Slim Suit, Euro Slim+Vest  
2B No P Tux, Euro Slim Tux  
2BV Made up to 60R & 60L  
Also Pants: Non Pleated



**C67901-2B (New Navy)**  
2BV No P, 2BV No P+Vest,  
Euro Slim Suit, Euro Slim+Vest  
2BV Made up to 60R & 60L  
Also Pants: Non Pleated



**C67901-17 (French Blue)**  
2BV No P, 2BV No P+Vest,  
Euro Slim, Euro Slim+Vest Suit  
2BV Made up to 60R & 60L  
Also Pants: Non Pleated



**C67901-19 (Sky Blue)**  
Suits 2BV No P, Euro Slim Suit  
2BV Made up to 60R & 60L



**C67901-3 (Charcoal Gray)**  
2BV No P, 2BV No P+Vest,  
Euro Slim Suit  
2BV Made up to 60R & 60L  
Also Pants: Non Pleated



**C67901-5 (Medium Gray)**  
2BV No P, 2BV No P+Vest,  
Euro Slim Suit  
2BV Made up to 60R & 60L  
Also Pants: Non Pleated



**C67901-4 (Light Gray)**  
2BV No P, 2BV No P+Vest,  
Euro Slim Suit  
2BV Made up to 60R & 60L  
Also Pants: Non Pleated



**C67901-24 (Sterling Gray)**  
2BV No P 2BV No P+Vest,  
Euro Slim Suit  
2BV Made up to 56R & 56L  
Also Pants: Non Pleated



**C67901-20 (Hunter Green)**  
2BV No P, Euro Slim Suit  
2BV Made up to 60R & 60L  
Also Pants: Non Pleated



**C67901-21 (Olive)**  
2BV No P, Euro Slim Suit  
2BV Made up to 60R & 60L  
Also Pants: Non Pleated



**C67901-12 (Burgundy)**  
2BV No P, Euro Slim Suit  
2BV Made up to 60R & 60L  
Also Pants: Non Pleated



**C67901-8 (Brown)**  
2BV No P Suit  
2BV Made up to 60R & 60L  
Also Pants: Non Pleated



**C67901-16 (Camel)**  
2BV No P, Euro Slim Suit  
2BV Made up to 60R & 60L  
Also Pants: Non Pleated



**C67901-11 (Solid Tan)**  
2BV No P, 2BV No P+Vest,  
Euro Slim Suit  
2BV Made up to 60R & 60L  
Also Pants: Non Pleated



**C67901-5A (Snow White)**  
2BV No P, Euro Slim Suit  
2BV Made up to 60R & 60L



**MANTONI BLAZERS**

100% Wool

M40901-1 (Black Wool)  
2BV Blazer  
Has Blazer buttons  
Made up to 54R & 54L

M40901-2B (Navy Wool)  
2BV Blazer  
Has Blazer buttons  
Made up to 54R & 54L

M41000-1  
(Black Waffle Weave)  
2BV Jacket  
Made upto 52R & 54L

M41000-2  
(Navy Waffle Weave)  
2BV Jacket  
Made upto 52R & 54L

GIORGIO FIORELLI  
BLAZERS, DINNER &  
Shawl JACKET

G47815-1  
(Black Poly-Rayon)  
2BV Blazer  
Has Blazer Buttons  
Made up to 54R & 54L

G47815-2B  
(Navy Poly-Rayon)  
2BV Blazer  
Has Blazer Buttons  
Made up to 54R & 54L

G47815-5  
(Off White Poly-Rayon)  
Dinner Jacket  
Made upto 54R & 54L

G47815-5A  
(Snow White Poly-Rayon)  
Dinner Jacket  
Made upto 54R & 54L

DRAY SCOTT  
100% WOOL BY REDA

D30022-1 (Off White)  
Dinner Jacket  
Made up to 50R & 50L



**BLAZERS, DINNER JACKETS  
& SPORT JACKETS**



2 Button Blazer  
Available in both wool (Mantoni) &  
Poly-Rayon(Giorgio Fiorelli)



OFF WHITE(47815-5)

SNOW WHITE (47815-5A)

DINNER JACKET

**23** SPORTS JACKETS

**E88024-2**  
 (Blue Burgundy Windowpane)  
 2BV Jacket  
 Call for Sizes Available

**E88019-1 (Camel / Navy Plaid)**  
 2BV JACKET  
 Call for Sizes Available

**E88021-1 (Lt. Taupe Textured)**  
 2BV JACKET  
 Made upto 52R & 54L

**E88023-2 (Blue Cross Weave)**  
 2BV Jacket  
 Made up to 52R & 54L

**E88029-1 (Tan / Pink Plaid)**  
 2 BV Jacket  
 Call for Sizes Available

**DRAY SCOTT**  
 100% Premium Wool From Italy

**D30019-1**  
 (Camel Windowpane )  
 2BV Jacket  
 Made up to 50R & 50L

**D30019-2**  
 (Brown Windowpane)  
 2BV Jacket  
 Made up to 50R & 50L

**D30020-1**  
 (Navy Windowpane)  
 2BV Jacket  
 Made up to 50R & 50L

**D30021-1 (Blue Plaid)**  
 2BV Jacket  
 Made up to 50R & 50L

ENZO TOVARE

**SPORTS JACKETS**  
**100% PREMIUM WOOL**



**SPORT JACKETS  
WOOL BLEND**

**E86042-1**  
(Dark Gray Windowpane)  
2BV Jacket  
Made Upto 52R & 54L



**E86042-2**  
(Dark Blue Windowpane)  
2BV Jacket  
Made Upto 52R & 54L



**E86042-3**  
(Light Blue Windowpane)  
2BV Jacket  
Made Upto 52R & 54L



**E86042-4**  
(Taupe Windowpane)  
2BV Jacket  
Made Upto 52R & 54L



**E86043-1**  
(Gray Brown Textured)  
2BV Jacket  
Made Upto 52R & 54L



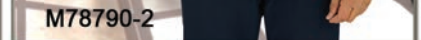
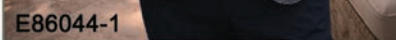
**E86043-2**  
(Taupe Textured)  
2BV Jacket  
Made Upto 52R & 54L



**E86044-1 (Navy Check)**  
2BV Jacket  
Made Upto 52R & 54L



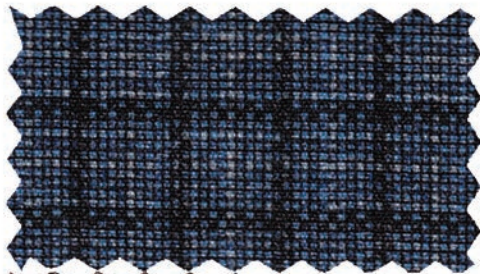
**M78790-2**  
(Camel Crossweave)  
2BV Jacket  
Made up to 52R & 54L  
100% Wool



# SPORT JACKETS STRETCH MICROFIBER BLEND



**B66043-1 (Blue Check)**  
2BV Jacket  
Made upto 52R & 54L



**B66043-2 (Taupe Textured)**  
2BV Jacket  
Made upto 52R & 54L



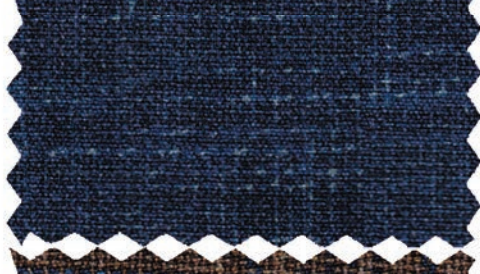
**B66044-1 (Neutral Textured)**  
2BV Jacket  
Made upto 52R & 54L



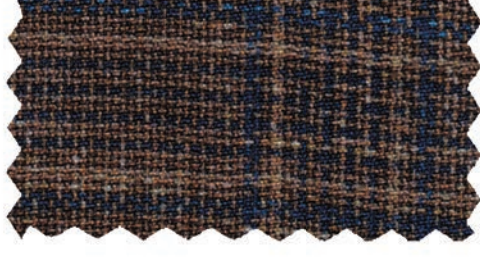
**B66044-2 (Cranberry Textured)**  
2BV Jacket  
Made upto 52R & 54L



**B66045-1 (Navy Crossweave)**  
2BV Jacket  
Made upto 52R & 54L



**B66048-1 (Brown Windowpane)**  
2BV Jacket  
Made upto 52R & 54L



**B96014-1**  
**(Navy Windowpane)**  
 Soft Jacket  
 Made upto 52R & 54L



**B96015-1**  
**(Natural Windowpane)**  
 Soft Jacket  
 Made upto 52R & 54L



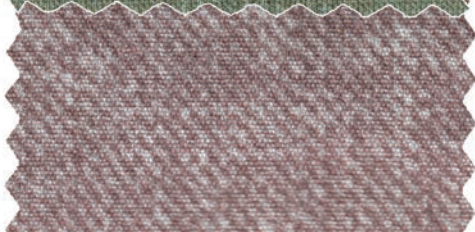
**B96015-2**  
**(Lavender Windowpane)**  
 Soft Jacket  
 Made upto 52R & 54L



**B96015-3**  
**(Green Windowpane)**  
 Soft Jacket  
 Made upto 52R & 54L



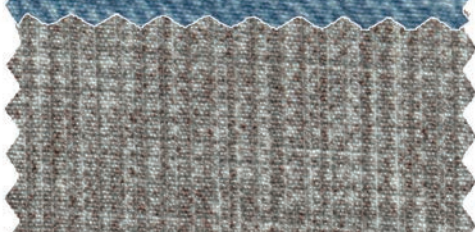
**B96016-1**  
**(Salmon Patterned)**  
 Soft Jacket  
 Made upto 52R & 54L



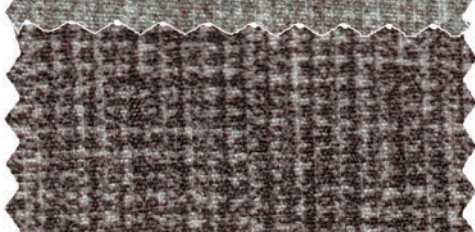
**B96016-2**  
**(Blue Patterned)**  
 Soft Jacket  
 Made upto 52R & 54L



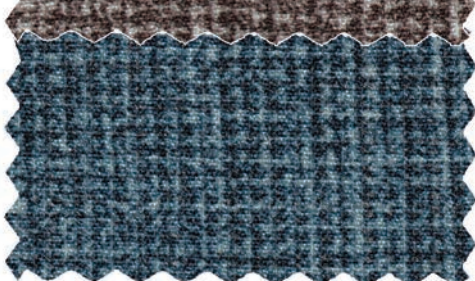
**B96017-1**  
**(Natural Patterned)**  
 Soft Jacket  
 Made upto 52R & 54L



**B96017-2**  
**(Brown Patterned)**  
 Soft Jacket  
 Made upto 52R & 54L



**B96017-3**  
**(Blue Patterned)**  
 2BV Jacket  
 Made upto 52R & 54L



**B96014-1**



**B96015-1**



**B96015-3**



**B96019-1**

**B96018-1 (Cranberry Patterned)**  
 Soft Jacket  
 Made upto 52R & 54L



**B96019-1 (Gray Plaid)**  
 Soft Jacket  
 Made upto 52R & 54L



VELVET, VEGAN LEATHER & SUEDE JACKET



PREMIUM VELVET  
100% COTTON

M42000-1 (Black Velvet)  
2BV, 1 Button Peak Lapel  
Tux Jacket  
Made up to 52R & 52L



M42000-1

M42000-2 (Blue Blue)  
2BV Jacket  
Made up to 52R & 54L



M42000-2

M42000-3 (Burgundy)  
2BV Jacket  
Made up to 52R & 52L



E85100-1

VEGAN LEATHER JACKET

E85100-1 (Black)  
2BV Jacket  
Made up to 52R & 54L



E85100-2

E85100-2 (Brown)  
2BV Jacket  
Made up to 52R & 54L



E85000-1

VEGAN SUEDE JACKET

E85000-1 (Tobacco)  
2BV Jacket  
Made up to 52R & 54L



E85000-2

E85000-2 (Tan)  
2BV Jacket  
Made up to 52R & 54L



E85000-3

E85000-3 (Blue)  
2BV Jacket  
Made up to 52R & 52L



E85000-4

E85000-4 (Light Gray)  
2 BV Jacket  
Made Upto 52R & 52L





# Dress Shirts

100% Cotton



Slim or Classic Fit Tux Shirt

M20028-1 (Solid White)



Wing Tip Tux Shirt

M20028-1 (Solid White)



Ribbed Bib Tux Shirt (Modern Fit)

M20029-1



Pique Bib Tux Shirt (Modern Fit)

M20029-2



SPREAD COLLAR  
Classic Fit or Slim Fit

M20001-1 (Solid White)



Classic Fit or Slim Fit  
or French Cuff

M20001-1 (Solid White)



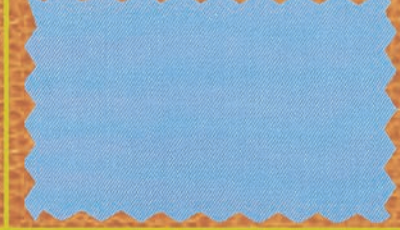
(Stretch) Slim-Fit

M20031-1 (Solid White)



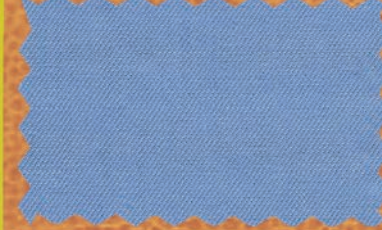
Classic Fit or Slim Fit

M20001-2 (Light Blue)



Classic Fit or Slim Fit

M20001-3 (Medium Blue)



Classic Fit

M20001-4 (Lavender)



Classic Fit

M20001-5 (Pink)



Classic Fit or Slim Fit

M20001-6 (Black)





### Dress Shirts

100% Cotton

Classic Fit or Slim Fit	Modern Fit or Slim Fit	Modern Fit or Slim Fit	Classic Fit
M20001-7 (Eggshell)	M20001-8 (Navy Satin)	M20033-1 (Black Texture)	M20019-1 (White Herringbone)

### Linen Shirts

Barrel Cuff - Modern Fit



M20040-1 White Linen	M20040-2 Lt. Blue Linen	M20040-3 Tan Linen



### Dress Shirts

100% Cotton

Classic Fit or Slim fit	Classic Fit or French Cuff	Tuxedo Shirt
E61101-1(Solid White)	E61102-1 (White Twill)	E71402-1 (White Pique)

# Stretch Patterned Shirts (Microfiber)

 Classic Fit	 Classic Fit	 Classic Fit	 Classic Fit
G26031-1(Blue/Navy Pattern)	G26032-1(Salt &Peper Pattern)	G26033-1(Light Blue Check)	G26034-1 (Blue/Navy Check)
			
 Classic Fit	 Classic Fit	 Classic & Slim Fit	 Classic & SlimFit
G26035-1(Light Blue Pattern)	G26036-1(Navy Pattern)	G26011-1(Textured White) 60% Cotton 40% Poly	G26024-1(Lt. Blue Herringbone) 60% Cotton 40% Poly
			
 Classic & SlimFit	 Classic Fit	 Classic Fit	 Classic Fit
G26025-1(Navy Fine Texture) 60% Cotton 40% Poly	G26003-1(White Tonal) 60% Cotton 40% Poly	G26004-1(Blue Check) 60% Cotton 40% Poly	G26005-1(Blue Pattern) 60% Cotton 40% Poly
			



Slim or Classic Fit Lay Down Tux Shirt

G1266 (Solid White)



Wing Tip Tux Shirt

G1266 (Solid White)



Spread Collar Slim Fit & Classic Fit

G26000-1 (Solid White)



Convertible Cuff & Expandable Neck Classic Fit and Slim Fit Stretch

G26002-1 (Stretch White)



Classic Fit or French Cuff or Slim Fit or Boys

G26000-1 (Solid White)



(Stretch) Slim Fit

G26002-1 (Solid White)



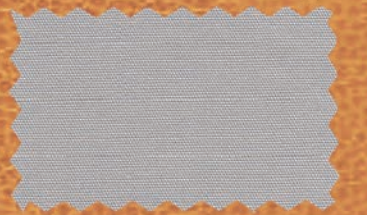
Classic Fit or Slim Fit

G26000-3 (Solid Beige)



Classic Fit or Slim Fit

G26000-4 (Solid Lt.Gray)



Classic Fit or Slim Fit

G26000-6 (Solid Black)



Classic Fit or Slim Fit

G26000-8 (Solid Blue)



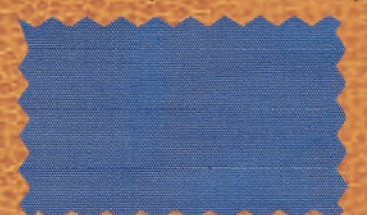
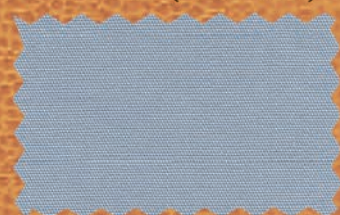
Classic Fit or Slim Fit

G26000-10 (Solid Pink)



Classic Fit or Slim Fit

G26000-13 (Solid French Blue)



Size Scale									
30	32	33	34	36	38	40	42	44	46



Albert-1 (Black)



Albert-2 (Navy)



Albert-3 (Gray)



Albert-5 (white)



Albert-6 Taupe



Alpha-1 Blue



Alpha-2 Blue Denim



Alpha-484 Black



Alpha-486 White



Alpha-487 Tan

Size Scale									
30	32	33	34	36	38	40	42	44	46



Alpha-488 Light Gray



Alpha-489 French Blue



Alpha-490 Camel



Alpha-491 Natural



Alpha-492 Light Camel



Alpha-493 Orange



Alpha-494 Soft Yellow



Alpha-495 Navy



Alpha-496 Black



Alpha-497 Red



Alpha-498 Powder Blue



Alpha-499 Bone



Alpha-500 White



Alpha-501 French Blue



Alpha-502 White



Alpha-503 Dark Blue

Size Scale									
30	32	33	34	36	38	40	42	44	46



Alpha-504 Black



Alpha-505 Lt. Wash Denim



Alpha-506 Blue Denim



Alpha-507 Blue Denim



Alpha-508 Black Denim



Berlin-1 Black



Berlin-2 Gray



Berlin-3 Lt.Gray



Berlin-12 Navy



Beta Skinny-1 Blue Denim



Milan-1 Stretch Black  
4 Way Stretch W/Lycra



Milan-2 Stretch Navy  
4 Way Stretch W/Lycra



Milan-3 Stretch Tan  
4 Way Stretch W/Lycra



Tokyo-1 Stretch Black  
4 Way Stretch W/Lycra



Tokyo-2 Stretch Navy  
4 Way Stretch W/Lycra



Tokyo-3 Stretch Tan  
4 Way Stretch W/Lycra

SCAN TO DOWNLOAD



# ENZO TOVARE

## SPRING 2026



Toll Free:  
**1.800.993.9688**  
Tel: (213) 624.8820  
FAX: 1.213.624.1048  
Email: [sales@gruppobravo.com](mailto:sales@gruppobravo.com)  
Minimum order 5 units  
\$8 service charge on orders less than 5 units  
**WWW.GRUPPOBRAVO.COM**  
Showroom & Warehouse  
GRUPPO BRAVO  
4265 S. Broadway  
Los Angeles, CA 90037

